

# Fuller's

FINE ART AUCTIONS



## The Kaprelian Camera Collection

NO RESERVE AUCTION

Saturday, November 19, 2011

Auction at 11 AM EST

Fuller's LLC 730 Carpenter Lane Philadelphia, PA 19119  
tel (215) 991-0100 fax (215) 991-0900 [www.FullersLLC.com](http://www.FullersLLC.com)



**Lot 12**  
Le Pascal Motorized Camera



**Lot 24**  
The Sanderson  
Regular Model  
Camera



**Lot 84**  
Sibyl, New Ideal Camera



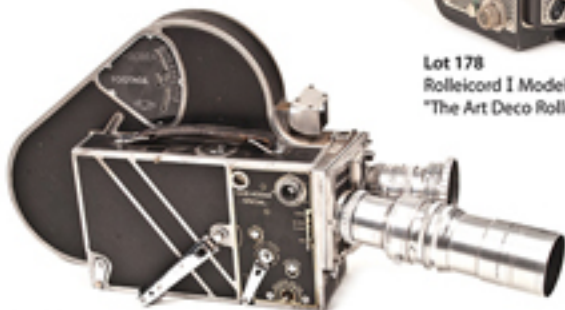
**Lot 105**  
Stereo Kodak Model 1



**Lot 178**  
Rolleicord I Model 1  
"The Art Deco Rollei"



**Lot 138**  
Ernmann Folding Strut Camera



**Lot 228**  
Ciné-Kodak Special  
16mm Movie Camera



**Lot 277**  
Leica 250 Reporter Body, Nickel Finish, Model FF converted to GG



**Lot 149**  
Zeiss Ikon Miroflex Camera

Visit [www.FullersLLC.com](http://www.FullersLLC.com)  
for more information



**Lot 128**  
Ensign Cupid Camera  
by Houghtons-Butcher



**Lot 230 (Detail)**  
Group of Original Prototype  
Scale Production Models  
and Designs for a 16mm  
Victor Movie Camera



**Lot 232 (Detail)**  
Original 1949 Raymond Loewy Associates  
Drawing of a Prototype Design for a 16mm  
Victor Movie Camera and Related  
Documentation



**Lot 174 (Detail)**  
U.S. Army Signal Corps  
KS-6 (1) Camera Set



**Lot 221**  
Japanese Army  
GSK-99 Aerial Camera



**Lot 244**  
Ducati Sogno Camera



**Lot 260**  
Mecaflex Camera by Metz



**Lot 248**  
Steky Model III  
Subminiature Camera

**Don't miss this opportunity to bid on 100s  
of rare and collectible cameras spanning  
the history of photography !**

# The Kaprelian Camera Collection No Reserve Auction Saturday, November 19, 2011 Auction at 11 AM EST

## AUCTION PREVIEW SCHEDULE

Saturday, Nov. 12 (Noon to 5 PM)  
Monday, Nov. 14 thru Friday, Nov. 18 (Noon to 5 PM daily)

Doors open at 9 AM on Saturday, November 19

### LOCATION

730 Carpenter Lane, Philadelphia, PA 19119-3406  
(tel) 1-215-991-0100

Fuller's Fine Art Auctions is located in a Wissahickon Schist stone building in the historic northwest section of Philadelphia known as West Mt. Airy, one block from Carpenter's Woods.

### *Catalog Contents*

<b>Lots 1 - 390 .....</b>	<b>pages 4 - 32</b>
<b>Terms and Conditions of Sale .....</b>	<b>pages 33 - 35</b>
<b>Terms of Guarantee .....</b>	<b>page 36</b>

Jeffrey P. Fuller, Pennsylvania Auctioneer License AU005414  
Fuller's LLC, Pennsylvania Auction Company License RY000923

## **Important Notice to all Buyers:**

A Buyer's Premium will be added to the successful bid price and is payable by the Buyer as part of the total purchase price. The Buyer's Premium for each individual lot is 18% (wire transfer fees may apply). Please refer to the Terms and Conditions of Sale in this catalog for further details.

Please note that all of the works of art reproduced in this catalog and on our website, where applicable, are copyright the artists or the estates of the artists.

All measurements are in inches, height preceding width, preceding depth. Exceptions are measurements in millimeters (mm) or centimeters (cm) where noted.

Please note that multiple photographs of every lot included in this sale are available through LiveAuctioneers. You may place absentee bids and/or bid live on the day of the auction through LiveAuctioneers ([www.liveauctioneers.com](http://www.liveauctioneers.com)).

Visit our website [www.FullersLLC.com](http://www.FullersLLC.com) for bidding instructions and a link to the LiveAuctioneers website.

**Fuller's Fine Art Auctions is now accepting consignments for future sales. We offer competitive terms for the sale of your works of art. Please call 215-991-0100 or email us at [info@FullersLLC.com](mailto:info@FullersLLC.com) at your earliest convenience.**

Copyright © 2011 Fuller's LLC. All Rights Reserved.

Dear Friends and Colleagues,

Edward K. Kaprelian (American, 1913-1997) was an avid collector of photographic equipment and materials during his lifetime, and amassed a large collection of important cameras spanning the history of photography. He held more than fifty United States and international patents. During WWII Kaprelian was the Chief of the United States Army Signal Corps Engineering Labs in Fort Monmouth, New Jersey, and later was the Chief Engineer at the Kalart Company. This sale will feature more than 350 cameras spanning the history of photography, including late 19th and early 20th century box cameras, view cameras, tropical cameras, and many early examples of American, British, French and German cameras.

Experienced as a full service, quality fine arts business specializing in the sale and appraisal of fine art since 1979, we are proud to bring the items in this sale to auction.

As the founder and director of Fuller's Fine Art Auctions and Jeffrey Fuller Fine Art, Ltd., I thank all of the consignors of the works of art that we are pleased to offer for sale. I am indebted to our wonderful staff, especially Jim Robinson, Gary Pelkey, Tim Malone, Camila Adach and Christianna Fail who have carefully and thoroughly prepared all that will make this auction a success. Most of all, I thank you, the bidders and buyers, for your participation in this sale. Thank you.

Sincerely,

Jeffrey P. Fuller  
Director

1. Rochester Optical Company Premier Box Plate Camera (Serial No. 10308). Manufactured in the USA circa 1889-1903.
2. R&J Beck Frena Box Camera (Serial No. 5506). Manufactured in London, England circa 1892.
3. Adlake Magazine Plate Box Camera (Serial No. R2773). Manufactured by Adams & Westlake Co. in Chicago, Illinois circa 1899.
4. Early Algate Wooden Box Camera (Serial No. 54875). Manufactured by T. Algate in Plymouth, England.
5. Adlake Magazine Plate Box Camera (Serial No. 10011). Manufactured by Adams & Westlake Company in Chicago, Illinois circa 1899.
6. Pocket Kodak (Red Leather 95 Version with removable shutter). Manufactured by Eastman Kodak Co. in Rochester, NY circa 1895.
7. Pocket Model Kodak. Manufactured by Eastman Kodak Co. in Rochester, NY circa 1896.
8. Kodak No. 2 Flexo Box Camera (Serial No. 105618). Manufactured by Eastman Kodak Co. in Rochester, NY.
9. Kodak No. 5 Weno Hawk Eye. Manufactured by Eastman Kodak Co. in Rochester, NY circa 1905.
10. Kodak No. 2 Brownie Model D, 120 Roll Film Camera. Manufactured by Eastman Kodak Co. in Rochester, NY circa 1914-1917.
11. Kodak No. 2 Film Pack Hawk-Eye, Metal Box Camera. Manufactured by Eastman Kodak Co. in Rochester, NY circa 1922-1925.
12. Pascal Motorized Roll Film Box Camera with Original Film (Serial No.13567). Manufactured by Japy Freres & Cie in France circa 1898.
13. Ernemann Roll Film Box Camera (Serial No. 1009466). Manufactured by Ernemann Werke, Dresden, Germany.
14. Kodak No. 3B Quick Focus Model A Camera. Manufactured by Eastman Kodak Co. in Rochester, NY circa 1906-1911.
15. Kodak No. 7 Weno Hawk-Eye Box Camera (Serial No. 2431). Manufactured by Eastman Kodak Co. in Rochester, NY successor to Blair Camera Company, circa 1908.
16. British Made Magazine Plate Camera with Bausch and Lomb Optical Co. Shutter. Unknown Manufacturer.
17. Cyclone Camera 3. Manufactured by The Western Camera Manufacturing Co. in Chicago, Illinois circa 1900.

18. Delmar Box Plate Camera. Manufactured by Sears Roebuck circa 1898.
19. Early Ensign Popular Reflex Box Camera. Manufactured by Houghton Ltd. in London, England. (Missing Lens, Viewing Hood, and Back Plate Holder).
20. Kodak No. 2 Stereo Box Camera (Serial No. 3013). Manufactured by Eastman Kodak Co. in Rochester, NY circa 1901-1905.
21. Stereo Puck Roll Film Camera. Manufactured by The Thornton-Pickard Manufacturing Company Ltd. in Altrincham, England 1933.
22. R&J Beck Ltd. Frena Magazine Film Camera (Serial No 15254), manufactured circa 1909.
23. Roll Film Camera with Velostigmat Lens (Serial No. 585), manufactured by Vicamphoto Appliance Corporation in Philadelphia, PA.
24. Sanderson Regular Model Plate Camera with Ross Lens and Bausch & Lomb Shutter (Patent No. 18071). Manufactured in London, England circa 1902-1910.
25. Sanderson Tropical Plate Camera (Patent No. 20915) with Kodak Anastigmat Lens and Bausch & Lomb Shutter.
26. The Phoenix (Phönix) Tropical Folding Plate Camera with Polished Teak Wood Body, Brass Hardware, Lumar Lens and Rulex Shutter. Manufactured by Willhelm Kenngott in Stuttgart, Germany circa 1924.
27. Folding Hub Plate Camera with Dame, Stoddard & Kendall, Boston, Mass. label on front. Possibly Manufactured by the Optical Company in Rochester, NY circa 1890's.
28. Pony Premo A Plate Camera (Serial No. 39854). Manufactured by the Rochester Optical Company in Rochester, NY circa 1896 -1902.
29. Sanderson Regular Model Plate Camera (Serial No. 14897) with Clemont & Gilmer Rapid Detective Lens. Manufactured by F.H. Sanderson.
30. Late 19th Century Wood and Brass Plate Camera. Manufactured by Perken, Son & Rayment in Hatton Garden, London, England.
31. The National Camera, Early 20th Century British Made View Camera with Aldis Uno Anastigmat Lens. Manufactured by the W. & Sons Company in London, England.
32. Poco B Camera (Serial No. 2540) with Bausch & Lomb Unicum Shutter. Manufactured by the Rochester Camera Company in Rochester, NY.
33. Century Camera Company Wooden View Camera with Carl Zeiss Jena Tessar Lens and Deckel Compur Shutter.



34. Conley Folding Plate Camera with 5x7 High Grade M Metrical Lens and Conley Safety Shutter. Manufactured by Conley Camera Company in Rochester, Minnesota.
35. British Made Thornton Pickard Triple Visto Mahogany and Brass Field Camera (Serial No. E00012) with an Aldis Anastigmat Lens (Serial No. 23199).
36. Premo Long Focus 5x7 Plate Camera with R & J Beck Isostigmat Lens and Bausch and Lomb Volute Shutter. Manufactured by R. O. & C. Co. in Rochester, NY.
37. Group of 5 British Lenses from Various Manufacturers including Wray London 7-1/2 x 5 Brass Lens (Serial No. 1458); Perken Son & Rayment Brass Optimus Lens; Busch's Rapid Symmetrical f/8 Brass Lens with Wood Lens Board; Ross London 1:6.8 F=9 inch Telecentric Lens (Serial No. 84153) with Leather Case; and J.H. Dallmeyer ADON Variable Telephoto Lens (Serial No. 65659).
38. Gundlach 4x5 View Camera (Serial No. 22) with Ilex Paragon Lens and No. 3 Acme Synchro Shutter. Manufactured by Gundlach Mfg. Corp. in Rochester, NY.
39. New Model Improved Wooden Plate Camera (Serial No. 606660), manufactured by Rochester Optical Company in Rochester, NY.
40. Late 19th Century Folding 5x7 Plate Camera with Brass Lens by A.S. Aloe & Co. in St. Louis, MO.
41. Criterion 8x10 View Camera (Serial No. 21) with T.T. & H. 13 inch Series VI Cooke Portrait Lens. Manufactured by Gundlach-Optical Co. in Rochester, NY.
42. Kodak View Camera No. 2-D (Serial No. 290524) with T. T. & H. 16 Inch Series V Cooke Process Lens (No. 6337). Manufactured by Eastman Kodak Co. in Rochester, NY.
43. Kodak View Camera No. 2-D (Serial No. 446943) with Carl Zeiss Jena 250mm Tessar Lens. Manufactured for Eastman Kodak Co. by Graflex, Inc. in Rochester, NY.
44. Seneca Plate Camera (Serial No. 72) with Smyth Symmetrical Lens and Bausch & Lomb Unicum Shutter. Manufactured by Seneca Camera Mfg. Co. in Rochester, NY.
45. Korona View Plate Camera Body (Serial No. 72) without Lens. Manufactured by Gundlach-Manhattan Optical Co. in Rochester NY.
46. New Model Wooden Plate Camera Body (Serial No. 15) without Lens. Manufactured by Rochester Optical Company, NY.
47. View Camera Body, without Lens. Manufacturer Unknown.

48. Group of 25 Large Format Wooden Film Holders from various manufacturers including (3) 8x10, (2) 5 x 11-5/8 Panorama, (3) 5x7, (9) 4x5, (2) Thornton-Pickard 3-1/4 x 4-3/4, (3) 3-1/4 x 4-1/2 Glass Plate, (3) 4-3/4 x 6-1/2 Glass Plate, (2) loose 4x5 Cover Slides without cases.
49. Kodak View Camera Body No. 2-D (Serial No. 398040A), without Lens. Manufactured for Eastman Kodak Co. by Graflex, Inc. in Rochester, NY.
50. Kodak No. 4 Screen Focus Plate Camera (Serial No. 1338). Manufactured by Eastman Kodak Co. in Rochester, NY. Patented January 5, 1897.
51. Eastern Star Premo Plate Camera with B&L Planatograph Lens.
52. Century Camera Company 4x5 Plate Camera (Serial Number 19830). Manufactured by Century Camera Co. in Rochester, NY.
53. J. Lizars Model E. Challenge Camera with Cooke Lens and Bausch & Lomb Shutter, manufactured circa 1903.
54. Kodak No. 4 Cartridge Model E Plate Camera with Bausch & Lomb Plastigmat Lens and Unicum Shutter. Manufactured by Eastman Kodak Co. in Rochester, NY.
55. Kodak No. 4 Cartridge Model E Plate Camera (Serial No. 4293). Manufactured by Eastman Kodak Co. in Rochester, NY.
56. Kodak No. 3-A Folding Brownie Camera (Serial No. 35204). Manufactured by Eastman Kodak Co. in Rochester, NY.
57. Kodak No. 5 Cartridge Model F Camera (Serial No. 17484). Manufactured by Eastman Kodak Co. in Rochester, NY.
58. Kodak No. 4 A Folding Roll Film Camera. Manufactured by Eastman Kodak Co. in Rochester, NY.
59. Kodak No. 5 Cartridge Model E Camera with Voigtländer Lens and Shutter. Manufactured by Eastman Kodak Co. in Rochester, NY.
60. Kodak No. 3A Autographic Model C Camera (Serial No. 726113). Manufactured by Eastman Kodak Co. in Rochester, NY.
61. Kodak No. 4 Folding Pocket Camera Model A (Serial No. 15676-C). Manufactured by Eastman Kodak Co. in Rochester, NY.
62. Kodak No. 3-A Folding Pocket Camera Model B-2 (Serial No. 64483-A). Manufactured by Eastman Kodak Co. in Rochester, NY circa 1908.
63. Kodak No. 1A Autographic Junior Camera (Serial No. 467788). Manufactured by Eastman Kodak Co. in Rochester, NY.
64. Kodak No. 3A Autographic Special Model B Camera with leather case (Serial No. 47902). Manufactured by Eastman Kodak Co. Rochester, NY.

65. Graflex 3A Camera with Cooke Lens by Taylor Taylor & Hobson Ltd. Manufactured by Folmer & Schwing Division of Eastman Kodak Co. in Rochester, NY.
66. Graflex 3A Camera with Curtain Aperture and Bausch & Lomb Tessar Lens. Manufactured By Folmer & Schwing Division of Kodak Co. in Rochester, NY.
67. Compact Graflex Camera with Curtain Aperture and Bausch & Lomb Tessar Lens. Manufactured by Folmer & Schwing Division of Eastman Kodak Co. in Rochester, NY.
68. Graflex 3A Camera with Voigtländer Heliar Lens. Manufactured by Folmer & Sons Division of Eastman Kodak Co. in Rochester, NY.
69. R.B. Graflex Series D Curtain Aperture Camera with Taylor-Hobson Cooke Lens. Manufactured by The Folmer Graflex Corporation in Rochester, NY.
70. No. 1 Seneca Jr. Roll Film Camera. Manufactured by Seneca Camera Mfg. Co. circa 1918.
71. Kodak Vest Pocket Autographic Camera (Serial No. 154662) with Ball Bearing Shutter. Manufactured by Eastman Kodak Co. in , NY.
72. Kodak Vest Pocket Autographic Camera (Serial No. 1678981). Manufactured by Eastman Kodak Co. in Rochester, NY.
73. Kodak Vest Pocket Autographic Camera (Serial No. 935975) with Leather Case. Manufactured by Eastman Kodak Co. in Rochester, NY.
74. Kodak Vest Pocket Autographic Camera (Serial No. 1533310). Manufactured by Eastman Kodak Co. in Rochester, NY.
75. Ansco Company No. 2A Folding Buster Brown Camera (Serial No. G107).
76. Ansco Company No. 5 Model D Folding Camera.
77. Ansco Company No. 9 Folding Camera.
78. Kodak No. 1A Folding Pocket Camera (Serial No. 136927). Manufactured by Eastman Kodak Co. in Rochester, NY.
79. Kodak No. 1A Speed Camera. Manufactured by Eastman Kodak Co. in Rochester, NY.
80. Kodak Rainbow Hawk-Eye No. 2A Folding Model B Camera (Serial No. 753139). Manufactured by Eastman Kodak Co. in Rochester, NY.

81. Kodak No. 1A Folding Pocket Camera (Serial No. 111748).  
Manufactured by Eastman Kodak Co. in Rochester, NY.
82. Kodak No. 3 Folding Pocket Camera (Serial No. 10489B).  
Manufactured by Eastman Kodak Co. in Rochester, NY.
83. Houghton Carbine Camera (Serial No. 218813) with Beck Lens.
84. British Sibyl, New Ideal Folding Camera (Serial No. E453) with  
Ross Xpres Lens. Manufactured by Newman and Guardia (N&G) in  
London, England.
85. Ica Ideal 325 Plate Camera with Carl Zeiss Jena Tessar Lens.
86. Ernemannwerke A.G. Bob O Folding Camera (Serial No. 821291).
87. Volta 295 Plate Camera (Serial No. E54575). Manufactured by  
Ica Akt. Ges. Dresden, Germany.
88. Graflex Finger Print Camera. Manufactured by The Folmer Graflex  
Corporation in Rochester, NY.
89. Junior Special, British Plate SLR Camera with Cooke Lens.  
Manufactured by Thornton Pickard, London, England.
90. Apem Reflex Camera with T.T.& H. Cooke Lens. Manufactured by  
Amalgamated Photographic Materials Ltd. in London, England.
91. Bentzin Primar SLR Camera with Carl Zeiss Jena Tessar Lens.  
Manufactured by Curt Bentzin Görlitz in Dresden, Germany.
92. Reflex Plate Camera with T.T. & H. Cooke Lens. Manufactured by  
Marion & Co. Ltd. in London, England.
93. Tourist Graflex Plate Camera with Beck Biplanat Lens. Manufactured  
by the Folmer & Schwing Company in Rochester, NY.
94. Auto Graflex Camera with T.T. & H. Cooke Lens. Manufactured by  
Folmer & Schwing Divison of Eastman Kodak Co. in Rochester, NY.
95. Ica Reflex 758 Camera by Zeiss Ikon (Serial No. K41982).
96. Auto Graflex Plate Camera with T.T. & H. Cooke Lens. Manufactured by  
Folmer & Schwing Divison of Eastman Kodak Co. in Rochester, NY.
97. Ross London Box Plate Camera (Serial No. 572) with two 5x4 Ross  
Rapid Symmetrical Lenses (No. 48806 and No. 48571).
98. Icarette Roll Film Camera (Serial No. E29585) with Novar Lens.  
Manufactured by ICA A.G. in Dresden, Germany.
99. Krauss Rollette with Rollar Lens. Manufactured by G.A. Krauss  
in Stuttgart, Germany.

100. C.D.V. Tenex Folding Strut Camera with Dagor Lens. Manufactured by C.P. Goerz in Berlin, Germany.
101. Vest Pocket Tenax Camera with Dagor III Lens. Manufactured by C. P. Goerz Optical Works Ltd. in London, England.
102. Amourette Camera (Serial No. 002028) with Double Miniscope Lens. Manufactured by O.T.A.G in Vienna, Austria. Includes Vintage Advertisement.
103. Dallmeyer Snapshot Camera. Manufactured by J.H. Dallmeyer Ltd. in London, England.
104. Zeiss Ikon Box-Tengor 54/15 Camera with Goerz Frontar Lens and Walter Talbot Berlin Label.
105. Kodak Stereo Camera Model 1 with Kodak Anastigmat Lenses. Manufactured by Eastman Kodak Co. in Rochester, NY.
106. Ica Polyscop Stereo Camera with Carl Zeiss Jena Lens.
107. Butcher's Reflex Carbine 120 Roll Film Camera (Serial No. C19817) with Aldis Uno Anastigmat Lens. Manufactured by W. Butcher & Sons in England.
108. French Stereo Camera (Serial No. 9734) with E Krauss Tessar Lenses. Marked Francia, Paris, Brevete, S.G.D.G. France & Etranger.
109. Early 20th Century French Jumelle Camera (Serial No. 2419) with Carl Zeiss Jena Protar Lens. Manufactured by H. Bellieni Constructeur d'Instruments de Précision in Nancy, France.
110. KW Reflex Box Camera with Steinheil Actinar Lens.
111. Simili Jumelle A Mise AuPoint Automatique Camera (Serial No. 920). Manufactured by J. Zion Opticien Constructuer, Paris, France.
112. Carl Zeiss Jena Camera with Tessar Lens and Minimum-Palmos D.G.M. label on side.
113. Plaubel Makina Outfit, including Plaubel Makina (Black) Camera with Anticomar 1:2.9 F=10cm Lens, Roll Film Adapter, (4) Metal Sheet Film holders, T 1.5 Vorsatzlinse Filter, Plaubel Grun (green/yellow) Filter, Plaubel Orange Filter, Plaubel Mittel (yellow) Filter, Plaubel Din Filter, Plaubel R 0.1 Filter, Plaubel Blau (Blue) Filter, Plaubel Rot (Red) Filter, Plaubel U.V. Filter, Plaubel Tele-Makinar 1:4.8 F=19cm Lens with Leather Lens Case and Cap, Plaubel Orthar 1:6.8 F=7.3cm Lens and a Leather Camera Case. Manufactured in Frankfurt, Germany.
114. Plaubel Makina I (Black) Plate Camera with Anticomar Lens. Manufactured in Frankfurt, Germany circa 1926.

115. Delta 76 Folding Plate Camera with Carl Zeiss Jena Tessar Lens. Manufactured by Ica A.G. in Dresden, Germany circa 1911.
116. Ihagee Ultrix Folding Roll Film Camera (Serial No. 407326) with Anastigmat Lens and Pronto Shutter. Manufactured by Ihagee Kamerawerk Steenbergen & Co. in Dresden, Germany circa 1930s.
117. Ihagee Folding Plate Camera with Anastigmat Trioplan Lens and Ibsor Shutter. Manufactured by Ihagee Kamerawerk Steenbergen & Co. in Dresden, Germany.
118. Ica Folding Plate Camera with Maximar Lens, Compur Shutter and Kalart Synchronized Range Finder. Manufactured by Ica A.G. in Dresden, Germany.
119. Ihagee Duplex Folding Plate Camera with Trioplan Lens and Compur Shutter. Manufactured by Ihagee Kamerawerk Steenbergen & Co. in Dresden, Germany circa 1930.
120. Ica A.G. Ideal 246 Folding Plate Camera with Carl Zeiss Jena Doppel-Amatar Lens and Compur Shutter. Manufactured by Ica. A.G. in Dresden, Germany.
121. Ica A.G. Lloyd Folding Roll Film Camera (Serial No. K97060) with Carl Zeiss Jena Tessar Lens and Compur Shutter. Manufactured by Ica A.G. in Dresden, Germany.
122. Mandel PDQ Street Camera, Model H (Serial No. 1723). Manufactured by PDQ in Chicago, USA circa 1930s.
123. Al-Vista Panoramic Camera. Manufactured by The Multiscope & Film Co. in Burlington, Wisconsin.
124. Kodak 3A Panoram Camera (Serial No. 1140). Manufactured by Eastman Kodak Co. in Rochester, NY circa 1926-28.
125. Early Model Ensignette Folding Strut Roll Film Camera (Missing Time Lever). Manufactured by Houghtons Ltd. in London, England. (The case and paperwork are in poor condition).
126. British Made Ensignette No. 2 Roll Film Camera (Serial No. 14647). Manufactured by Houghtons Ltd. in London, England.
127. British Made Ensignette Folding Strut Roll Film Camera (Serial No. P3094). Manufactured by Houghtons Ltd. in London, England.
128. Ensign Cupid Roll Film Camera. Manufactured by Houghtons-Butcher in London, England circa 1922.
129. Ensignette Junior 2A Roll Film Camera. Manufactured by Houghtons Ltd. in London, England.

130. Ihagee Exakta Film Camera (Serial No. 422743) with Carl Zeiss Jena Tessar Lens. Manufactured by Ihagee Kamerawerk Steenbergen & Co. in Dresden, Germany.
131. Ihagee Exakta Jr. Camera (Serial No 480054) with Ihagee Anastigmat Lens. Manufactured by Ihagee Kamerawerk Steenbergen & Co. in Dresden, Germany circa 1938.
132. Rare Beira 35mm Folding Camera with Xenar Lens, Compur-Rapid Shutter and Jenaer/Okula Viewfinder. Manufactured by Kamera-Fabrik Woldemar Beier, Germany. (Missing Dial on Top Left).
133. Certo Dollina Roll Film Camera (Serial No. 20619) with Certar Lens. Manufactured by Certo in Dresden, Germany circa 1940.
134. Dollina 35mm Roll Film Camera (Serial No.15698) with Schneider-Kreuznach Xenar Lens and Compur-Rapid Shutter. Manufactured by Certo, Dresden, Germany.
135. Ica Stereolette-Cupido 620 Camera (Serial No. H1148) with a 35mm Roll Film Adapter made by Henry Lester. Manufactured by Ica A.G. in Dresden, Germany circa 1910.
136. Heidoscop Stereo Camera (Serial No. 70963) with (3) Carl Zeiss Jena Tessar Lenses and Leather Case. Manufactured by Franke & Heidecke in Braunschweig, Germany.
137. Ica Bébé (Bebe) Folding Strut Plate Camera with Carl Zeiss Jena Tessar Lens and leather case. Manufactured by Ica A.G. In Dresden, Germany circa 1911-1925.
138. Ernemann Folding Strut Camera (Serial No. 813176) with Ernotar Lens. Manufactured by Ernemann-Werke A.G. in Dresden, Germany.
139. Ensign Carbine (Copper) Tropical Roll Film Camera Model No. 7 (Serial No. F9457) with Ross London Xpres Lens and Compur Shutter. Manufactured by Houghton-Butcher in London, England circa 1930s.
140. Watch Pocket Carbine Model No. 6 Tropical Roll Film Camera (Serial No. D4043.) with Carl Zeiss Jena Tessar Lens, Compur Shutter and Leather Case. Manufactured by Houghton-Butcher in London, England circa 1926.
141. British New Special Sibyl, Folding Plate Camera (Serial No. A646) with Wray Lustrar Lens. Manufactured by Newman and Guardia (N&G) in London, England.
142. Hüttig A.G. (Huttig) Model 1907 Ideal Folding Plate Camera with Zeiss Ikon Back. Manufactured in Dresden, Germany.
143. Heag I, Folding Plate Camera with Vilar Lens. Manufactured by Ernemann-Werke A.G. in Dresden, Germany.

144. Heag II Series II, Folding Plate Camera (Serial No. 252617) with Ernon Lens. Manufactured by Ernemann-Werke A.G. in Dresden, Germany.
145. Heag VII, Folding Plate Camera (Serial No. 1300098) with Ernon Lens and Cronos C Shutter. Manufactured by Ernemann-Werke A.G. in Dresden, Germany.
146. C.P. Goerz Folding Plate Camera (Serial No. 79242) with Dagor Lens. Manufactured by C.P. Goerz in Berlin, Germany.
147. Van Neck (VN) Press Camera with an Ernemann Ernostar f/1.5 12.5cm Lens. Manufactured in London, England.
148. Contessa Nettel Press Camera (Serial No. 31639) with Carl Zeiss Jena Series Ic Lens. Manufactured in Germany.
149. Zeiss Ikon Miroflex SLR Camera with Carl Zeiss Jena Tessar Lens and Leather Case. Manufactured in Germany.
150. Ernemann Folding Reflex Camera with Carl Zeiss Jena Tessar Lens. Manufactured by Ernemann-Werke A.G. in Dresden, Germany.
151. Mentor Camera with Carl Zeiss Jena Tessar Lens, Case and Additional Film Backs. Manufactured by Mentor-Kamera-Fabrik Goltz & Breutmann in Dresden, Germany.
152. Zeiss Ikon Nettel Press Camera (Serial. No. 54892) with Carl Zeiss Jena Tessar Lens and Kalart Synchronized Range Finder.
153. Group of 3 Pathé Baby 9.5mm Motion Picture Projectors. Manufactured by Pathé Freres in Paris, France circa 1922.
154. Devry 16mm Motion Picture Camera.
155. Midas 9.5mm Camera/Projector (Serial No. 4284) with Leather Case.
156. Midas 9.5mm Camera/Projector (Serial No. 4867) with Leather Case.
157. Societe Francaise Sept Paris 35mm Movie Projector (Serial No. V08839) with H Roussel Stylor Lens. Manufactured in France circa 1922.
158. Komlosy Dunstable Aerial Camera (Serial No.142) with Ross London Xpres Lens.
159. Exakta 66 (6x6cm) SLR Roll Film Camera with Carl Zeiss Jena 80mm Tessar F/2.8 Lens. Manufactured by Ihagee in U.S.S.R. Occupied Dresden, Germany circa 1955.
160. Primar Reflex II SLR Camera (Serial No. 31274) with Carl Zeiss Jena Tessar Lens. Manufactured by Bentzin in Görlitz, Germany.



161. Primarflex SLR Camera (Serial No. 29854) with Meyer Görlitz Trioplan Lens. Manufactured by Curt Bentzin in Görlitz, Germany. (Back does not close tightly).
162. Primarflex SLR Camera (Serial No. 24855) with Meyer & Co. Tele Megor Lens and Meyer Gelbfilter Hell. Manufactured by Curt Bentzin in Görlitz, Germany.
163. Hasselblad 1000F (Serial No. CT22677) with 80mm Carl Zeiss Tessar Lens (Serial No. NR834199) and Film Magazine (Serial No. CT28369). Including Several Hasselblad Accessories: Handle, Contact Shoe Attachment and Camera Strap. Manufactured by The Victor Hasselblad AB Company in Sweden.
164. Busch Pressman Model C, Folding View Camera with Carl Zeiss Jena Tessar Lens, Compur Shutter and Vue-Focus Range Finder. Manufactured by Busch Precision Camera Corporation in Chicago, IL.
165. Graflex Speed Graphic Folding Press Camera (Serial No. 412651) with Kodak Ektar Lens, Kodak Shutter and Kalart Synchronized Range Finder. Manufactured by Graflex, Inc. in Rochester, NY.
166. Busch Pressman Model C, View Camera (Serial No. 21662) with Xenar Lens, Compur Shutter and Kalart Synchronized Range Finder. Manufactured by Busch Optical Mfg. Co. in Chicago, IL.
167. Bertram BCI Type Press Camera (Serial No. 1615) with (2) Schneider-Kreuznach Xenar Lenses (f/3.5 105mm and f/5.5 180mm), (5) Bertram Light Meters and a Pair of Metal Sheet Film Holders. Manufactured in West Germany.
168. Dawe Press Camera Type 1714B (No. 58) with Ross Xpres Lens and Synchro-Compur Shutter. Manufactured by Dawe Instruments Ltd. in London, England circa 1952.
169. Beseler C-6 Press Camera with Kodak Ektar Lens and Synchro-Compur Shutter. Manufactured by The Charles Beseler Company, USA circa 1958.
170. Peckham Wray Plate Camera (No. 165, Admiralty Pattern No. 8901) with Wray Lustrar Lens and Synchro-Compur-P Shutter. Manufactured by Wray Optical Works in England.
171. Perkin-Elmer f/12 680mm F/12 Compact "Solid Cat (Catadioptric)" Telephoto Lens (Serial No. 244) with hard plastic case. Manufactured by Perkin-Elmer Co. in NY for the US Military. Etched into Barrel "U.S. Army/BRL APG Md."
172. Graflex Graphic 45 Camera (Serial No. 2382). The Civilian Version of the Military Issued Speed Graphic with Kodak Anastigmat Special Lens. Manufactured by the Folmer Graflex Corporation in Rochester, NY.

173. Graflex Speed Graphic Camera (Serial No. 892324) with Optar Lens, Full Synchronomatic Graphex Shutter by Wollensak and Kalart Synchronized Range Finder. Including Graflite Jr. Flash Extension. Manufactured by Graflex Inc. in Rochester, NY.
174. U.S. Army Signal Corps KS-6 (1) Camera Set (Serial No. 32). Including a KE-4 70mm Roll Film Camera with (2) Kodak Ektar Lenses (102mm and 205mm), Flash Unit, Filters and Film with a Metal Halliburton Case. Manufactured by Graflex Inc. in Rochester, NY.
175. U.S. Army Signal Corps KS-6 (1) Camera Set (Serial No. 239). Including a KE-4 70mm Roll Film Camera with (2) Kodak Ektar Lenses (102mm and 205mm), Flash Unit, Filters and Film in a Metal Halliburton Case. Manufactured by Graflex Inc. in Rochester, NY.
176. Graflex X1 Camera (Serial No. X52046) with 100mm Carl Zeiss Tessar Lens and Case. Manufactured by Graflex Inc., Division of Singer, USA.
177. Rolleicord II Twin Lens Reflex, 120 Roll Film Camera (Serial No.1092359) with Compur-Rapid Shutter and Zeiss Triotar Lenses. Manufactured by Franke & Heidecke in Braunschweig, Germany circa 1949.
178. Rolleicord I Model 1 "The Art Deco Rollei" Twin Lens Reflex, 120 Roll Film Camera (Serial No. 011021) with Compur Shutter and Zeiss Triotar Lens. Manufactured by Franke & Heidecke in Braunschweig, Germany circa 1933.
179. Rolleicord with Rolleikin Back, Twin Lens Reflex, 120 Roll Film Camera with Compur Shutter and Zeiss Triotar Lens. Manufactured by Franke & Heidecke in Braunschweig, Germany.
180. Rolleicord Twin Lens Reflex, 120 Roll Film Camera (Serial no. 612128) with Compur Shutter and Zeiss Triotar Lens. Manufactured by Franke & Heidecke in Braunschweig, Germany.
181. Early Rolleicord, Twin Lens Reflex, 120 Roll Film Camera (Serial No. 064269) with Compur Shutter and Zeiss Triotar Lens. Manufactured by Franke & Heidecke in Braunschweig, Germany.
182. Early Rolleicord, Twin Lens Reflex, 120 Roll Film Camera (Serial No. 906200) with Compur Shutter and Zeiss Triotar Lens. Manufactured by Franke & Heidecke in Braunschweig, Germany.
183. Rolleicord II Twin Lens Reflex Roll Film Camera (Serial no. 612603) with Zeiss Triotar Lens and Compur Shutter. Manufactured by Franke & Heidecke in Braunschweig, Germany.
184. Rolleicord, Twin Lens Reflex, 120 Roll Film Camera with Compur Shutter and Zeiss Triotar Lens. Manufactured by Franke & Heidecke in Braunschweig, Germany circa 1949.

185. Rolleiflex Original, Twin Lens Reflex, 120 Roll Film Camera (Serial No. 65099) with Compur Shutter and Zeiss Tessar Lens. Manufactured by Franke & Heidecke in Braunschweig, Germany.
186. Rolleiflex Standard, Twin Lens Reflex, 120 Roll Film Camera with Compur Shutter and Zeiss Triotar Lens. Manufactured by Franke & Heidecke in Braunschweig, Germany.
187. Rolleiflex Twin Lens Reflex, 4x4 Roll Film Camera (Serial No. 157383) with Compur-Rapid Shutter and Zeiss Tessar Lens. Manufactured by Franke & Heidecke in Braunschweig, Germany.
188. Rolleiflex 4x4 Twin Lens Reflex Roll Film Camera (Serial No. 2022092) and Case (gray) with Synchro Compur Shutter and Xenar Lens. Manufactured by Franke & Heidecke in Braunschweig, Germany.
189. Rolleiflex Automat Twin Lens Reflex Roll Film Camera (Serial No.1075979) with Zeiss Tessar Lens and Compur-Rapid Shutter. Manufactured by Franke & Heidecke in Braunschweig, Germany.
190. Rolleiflex Automat Twin Lens Reflex Roll Film Camera (Serial No. 1058332) with Xenar Lens and Compur-Rapid Shutter. Manufactured by Franke & Heidecke in Braunschweig, Germany.
191. Rolleiflex Automat Twin Lens Reflex Roll Film Camera (Serial No. 744014) with Zeiss Tessar Lens and Compur-Rapid Shutter. Manufactured by Franke & Heidecke in Braunschweig, Germany.
192. Rollei Magic Twin Lens Reflex 120 Roll Film Camera (Serial No. 2510761) with Prontomat-S Shutter and Xenar and Heidosmat Lenses. Manufactured by Franke & Heidecke in Braunschweig, Germany.
193. Mentorett Twin Lens Reflex Roll Film Camera (Serial No. 53339) with Mentor Special Lens. Manufactured by Mentor in Dresden, Germany circa 1936.
194. Weltaflex Twin Lens Reflex Roll Film Camera (Serial No. 28755) with E. Ludwig Meritar Lenses and Prontor-SVS Shutter. Manufactured by Welta in U.S.S.R. Occupied Germany.
195. Semflex Studio Reflex, Twin Lens Reflex Roll Film Camera (Serial No. 450540) with Berthiot Tele Lenses.
196. Pontiac Bakelite Folding 6x9 Camera. Manufactured by Pontiac circa 1938-1941.
197. Wirgin Stereo Roll Film Camera with Steinheil Lenses. Manufactured in Germany.

198. Iloca Stereo Roll Film Camera (Serial No. 311091) with Jlitar Lenses. Manufactured by Kamerawerke Wilhelm Witt in Hamburg, Germany circa 1950s.
199. First Miniature Flash Bulb, M2 Manufactured by G.E. in 1953. Encapsulated in Resin.
200. Photax II 6x9 Roll Film Bakelite Viewfinder Camera with Boyer Paris Series VIII Lens. Manufactured in France circa 1938.
201. Purma Special Roll Film Camera with Beck Anastigmat Lens. Including a Box of (6) Lens Accessories. Manufactured by Purma Cameras Ltd. in London, England circa 1937.
202. Purma Plus Roll Film Camera with Purma Anastigmat Lens. Manufactured by Purma Cameras Ltd. in London, England circa 1950s.
203. Futura Camerawerk Efka 24 (Serial No. 11403), 35mm Camera with Elor 1:2.8, f/4.0 cm Lens (Serial No. 11422) and Compur-Rapid Shutter. Manufactured in Germany by Fritz Kuhnert in Freiburg, Breisgau, Germany.
204. Necca 35mm Camera with Rodenstock-Trinar Lens and Prontor II Shutter. Manufactured by Necca Kamerawerkstatte in Germany circa 1947-50.
205. Agiflash Bakelite Roll Film Camera. Manufactured by Agilux Ltd. in Croydon, England circa 1954.
206. Perfix Speed Candid Bakelite Camera (Serial No. 2713) with Graf Perfix Anastigmat Lens. Manufactured by Candid Camera Corporation in Chicago, Illinois circa 1938. This camera is marked with the original owners name on the back of the of the camera as well as the top of the viewfinder.
207. Zeiss Ikon Ikonette (Serial No. S90774) with Novar Lens and Pronto Shutter.
208. Kodak Bantam Folding Bakelite Camera with Original Box. Manufactured by Eastman Kodak Co. in Rochester, NY circa 1938.
209. Kodak Bantam f/6.3 Folding Bakelite Camera. Manufactured by Eastman Kodak Co. in Rochester, NY circa 1938.
210. SEM Kim, 35mm Roll Film Viewfinder Camera with Cross Lens. Manufactured by SEM in France circa 1947.
211. Kodak Retina II Type 122 Camera (Serial No. 960330) with Xenon Lens and Compur-Rapid Shutter. Manufactured by Eastman Kodak Co. in Rochester, NY circa 1936.

212. Kodak Flash Bantam Camera with Kodak Anastar Lens. Manufactured by Eastman Kodak Co. in Rochester, NY circa 1948.
213. Gelto D III Silver Roll Film Camera. Manufactured in Japan circa 1937.
214. Beltica Folding 35mm Roll Film Camera with E. Ludwig Meritar Lens and Cludor Shutter. Manufactured by VEB Belca-Werk, Dresden, Germany.
215. Edinex 35mm Viewfinder Camera with Schneider-Kreuznach Lens and Prontor II Shutter. Manufactured by Wirgin in Wiesbaden, Germany circa 1930's.
216. Super ELJY Type 3, viewfinder camera. Manufactured by Lumière in France circa 1939.
217. The Soho Cadet Folding 120 Roll Film Bakelite Camera with Original Box. Manufactured by Soho Limited in London, England.
218. U.S. Army Signal Corps Aerial Spotting Camera (Serial No. 1) with Wollensak 10 inch f/5.6 Raptar Telephoto Lens. Manufactured by The Kalart Co. Inc.
219. Kodak 35 Military Camera (Serial No. 135371). Signal Corps Camera PH 324 Ser. 3615 Ord. No. 29461 Phila-44-54. Manufactured by Eastman Kodak Co. in Rochester, NY. (The camera has visible corrosion).
220. U.S. Army Signal Corps 70mm Roll Film KE-4 Camera with (2) Kodak Ektar Lenses (102mm and 205mm). Manufactured by Graflex Inc. in Rochester, NY.
221. Japanese Army Ultra Small Handheld Aerial Roll Film Camera (GSK-99) with Hexar Ser. II Lens and KOO-Tiyoko Shutter. Including a Metal Carrying Case, (2) Additional Roll Film Backs and (2) Lens Filters. Manufactured circa 1939.
222. Signal Corps Engineering Laboratories 33mm f/0.6 Lens with Label on the Barrel "World's Fastest Lens".
223. Xenon 1:2 f=12.5cm Lens (Serial No.64785).
224. Rokuoh-Sha Folding Plate Camera with Hexar Ser. 1 Lens.
225. Zeiss Ikon Movikon 16mm Movie Camera (Serial No. W49520). Manufactured in Germany.
226. Zeiss Ikon Movikon 16mm Movie Camera (Serial no. 49305) with Extra Sonnar Lens. Manufactured in Germany.
227. Ciné-Kodak (Cine Kodak) K-100 Turret, 16mm Movie Camera. Manufactured by Eastman Kodak in Rochester, NY.

228. Ciné-Kodak Special (Cine Kodak), 16mm Movie Camera with a 200ft Film Footage Magazine. Manufactured by Eastman Kodak Co. in Rochester, NY.
229. Paillard Bolex H16 F25, 16mm Movie Camera (Serial No. 114024) with Lytar and Cooke Lenses on Turret, Grip Handle, Motor (No. 23446) and a pair of American Bolex Winders.
230. Group of Original Prototype Scale Production Models and Designs for a 16mm Victor Movie Camera by Victor Animatographic Corporation in Davenport, Iowa. These range from hand-carved wood to cast metal, with a complete "finished" lacquered wood model to show the final product. Nine steps of production and various separate machined parts are represented. Final model size is 8-1/2 x 6-1/4 x 5 inches. Given to Edward Kaprelian by Mr. Morris Schwartz, founder of The Kalart Company.
231. Group of 4 Movie Cameras, including Victor Model 5 Animatograph Ciné Camera with (3) Lens Turret in storage case and (3) Early Victor Ultra Cine Cameras. Manufactured by the Victor Animatographic Corporation, Davenport, IA.
232. Original 1949 Raymond Loewy Associates Drawing of a Prototype Design for a 16mm Victor Movie Camera with Related Documentation, Invoices and Correspondence. Raymond Loewy Associates, New York was commissioned in 1949 by the Victor Animatographic Corporation in Davenport, Iowa to design a new 16mm motion picture camera. The drawing is colored pencils on paper, it is matted with an 8 ply acidic mat (unframed). 10 x 9 inches (sight), 14-1/2 x 13 inches (mat). Covered with a protective plastic sheet. Tape and glue residue has yellowed considerably around all the edges, visible under the mat. The mat shows surface dirt. Given to Edward Kaprelian by Mr. Morris Schwartz, founder of The Kalart Company.
233. Pair of French Binoculars. Including Lemarie Paris 6.8.10 Powers Stereo Changeable Binoculars imported by Pinkham & Smith Company in Boston and a Terraquascope 8 x 30 Binoculars Imported by Andrew J. Lloyd, Boston.
234. Ricoh Teleca 240 Binoculars with built-in Camera (Serial No. 70101277). Manufactured in Japan.
235. Carl Zeiss Jena Feldstecher Vergr.=6 Binoculars (Serial No. 6559).
236. Group of 4 German 35mm Cameras from Various Manufacturers including Finetta Super with Finetar f/2.8 Lens (Camera Serial No. 042163), Finetta with Finetar f/4 Lens (Camera Serial No. 035443), Finetta with Finetar f/4 Lens (Camera Serial No. 024731) and Steinette with Steiner-Bayreuth f/3.5 Lens.

237. Pair of German 35mm Cameras, including Lordox 24x36 by Leidolf Wetzlar (Serial No. 33660) and Lordomat (Serial No. 64549) with Lordonar f/2.8 50mm Lens and Schacht-Travenar f/4 135mm Lens.
238. GaMi 16 Subminiature Camera (Serial No. 340263) with accessories including Filtro No. 10, Filtro U.V. No. 13, Flash Adapter and Tripod Adapter. Manufactured by Officine Galileo Di Milano in Italy circa 1955.
239. GaMi 4X f/4 TeleLens with Leather Case. (Lens Serial No. 22077). Manufactured by Officine Galileo Di Milano, Italy.
240. Ferrania Condor I (Serial No. 006467) 35mm Roll Film Camera with Officine Galileo Eliog Lens and Iscus Shutter. Manufactured in Italy.
241. Minicord Subminiature Camera (Serial No. 1447) with Leather Case and Film Cartridges. Manufactured by C.P. Goerz in Germany.
242. C.P. Goerz Minilux Enlarger (Serial No. 5782). Manufactured in Austria.
243. Agfa Movex Reflex Movie Camera with accessories including an Agfa Tele-Centon 100 Telephoto Attachement Type 5265 for Movex Reflex in Original Box, (3) Film Cartridges, Type 5247 Handle in Original Box and Carrying Case.
244. Ducati Sogno Camera (Serial No. 07799) with Vitor f/3.5 Lens and Five Used Ducati Film Cartridges. Manufactured by Ducati in Bologna, Italy.
245. Photavit 24 x 24mm Camera (Serial No. 51520) with Radionar f/3.5 Lens and Compur-Rapid Shutter. Manufactured in Germany.
246. Kiev Vega 2 Subminiature Camera. Manufactured in Russia circa 1962.
247. Tynar 16mm Subminiature Camera with an Original Film Cartridge. Manufactured circa 1950.
248. Steky Model III 16mm Subminiature Camera. Including Telephoto Lens, Yellow Filter, Leather Cases for the Camera and Lens, Instruction Sheet (torn) and Part of the Original Wood Box. Manufactured in Japan circa 1950-52.
249. Group of Voigtländer Lenses and Accessories. Various items including Voigtländer Ergon f/2 5cm Lens, Voigtländer Nokton f/1.5 50mm Lens (Serial No. 3125760), Voigtländer Dynaret f/4.8 100mm Lens (No. 4198952), Voigtländer Skoparex f/3.4 35mm Lens (Serial No. 5766857), Vitoret 110 El Camera in original box, Kontur 24 x 36 Frame Finder in original box, Kontur 6 x 9 Frame Finder, TURNIT 35mm/100mm View Finder, and a Voigtländer 302/32mm Yellow Filter, 317/32mm UV Filter and 310/32mm Lens Shade in a Leather case. Manufactured in Germany.

250. Voigtländer Prominent Camera (Serial No. B10332) with Accessories. Including Nokton f/1.5 50mm Lens, Skoparon f/3.5 35mm Lens in Leather Case, Dynaron f/4.5 100mm Lens in Leather Case, G1 49S and Or 49s Filters with Lens Shade in a Leather Case and a Telomar f/5.5 100mm Lens/Viewfinder (Serial No. 14819). Manufactured in Germany.
251. Voigtländer Vitessa Camera with Color-Skopar f/3.5 50mm Lens and Synchro-Compur Shutter. Manufactured in Germany.
252. Voigtländer Vitessa T Camera (Serial No. 1121260) with Synchro Compur Shutter, Skoparet f/3.4 35mm Lens and Color- Skoparet f/2.8 50mm Lens. Manufactured in Germany.
253. Pair of Voigtländer Cameras. Various Models including Bessamatic SLR (Serial No. 1329) with Septon f/2 50mm Lens and Bessa Folding Camera with Heliar f/3.5 lens and Compur Rapid Shutter.
254. Contax I, 35mm Roll Film Camera (Serial No. AV10905) with Carl Zeiss Jena Sonnar f/1.5 Lens. Manufactured by Zeiss Ikon in Germany.
255. Pair of Zeiss Ikon 35mm Roll Film Cameras. Including a Contax (Serial No. A62685) with Carl Zeiss Biogon f/2.8 Lens and Contax (Serial No. K57592) with Carl Zeiss Jena Sonnar f/2 Lens. Manufactured by Zeiss Ikon in Germany.
256. Group of 3 English Corfield Periflex 35mm Cameras. Various Models including Periflex (Serial No. 615072) with Lumar-X f/3 Lens (Not functional), Periflex 2 (Serial No. 4918274) with Lumar-X f/3 Lens and Periflex 3a (Serial No. 41011961) with Lumax f/1.9 Lens.
257. MOM Mometta II Roll Film Camera (Serial No. 607090) with Ymmar f/3.5 50mm Lens.
258. Pair of Roll Film Viewfinder Cameras. Various Manufacturers including Diax with Xenar f/2.8 Lens and Synchro-Compur Shutter and Akarette Body with No Lens.
259. FOCA Roll Film Camera (Serial No. 78891) with Oplarex f/1.9 lens. Manufactured in France.
260. Mecaflex 24x24mm Camera (Serial No. 308) with Heinz Kilfitt f/3.5 Kilar Lens and Prontor-Reflex Shutter. Manufactured by Metz circa 1953.
261. Plaubel Makina Camera with Anticomar Lens and Roll Film Back. Manufactured in Germany.
262. Futura-S Roll Film Camera (Serial No. S18053) with Frilon f/1.5 50mm Lens, Tele-Futar f/3.8 75mm Lens and Synchro-Compur Shutter. Manufactured by Freiburg Br. in Germany.



263. Casca Roll Film Camera (Serial No. 51031) with Culminar f/2.8 lens. Manufactured by Steinheil in Munich Germany.
264. Agiflex Reflex Roll Film Camera (Serial No. R6940) with Agilux f/5.5 30cm Telephoto Lens and Agilux f/2.8 80mm Lens. Manufactured by Agilux Ltd. in Croydon, England.
265. Pair of Zeiss Ikon Cameras. Various Models including Contessa Roll Film Camera (Serial No. T97723) with Tessar Lens, Compur Shutter and Leather Carrying Case and a Movikon 8 Movie Camera (Serial No. K39895) with Carrying Case, Movitelar and Movigonar Accessories, each in a leather case.
266. Adox 300, 35mm Camera (Serial No. 003908) with Cassar f/2.8 45mm Lens and Compur-Rapid Shutter including (2) Interchangeable Film Magazines (Serial numbers: 010484, 015650) and a Leather Carrying Case. Manufactured in Germany circa 1957.
267. Pair of German 35mm Cameras including Eho-Altissa, Altix I, Version II circa 1939 and Goldhammer, Golda.
268. Zenit-C SLR Camera (Serial No. 5609300) with Mir-1 2.8/37 Lens.
269. Pair of Agfa 35mm Film Cameras. Various Models including Ambiflex (Serial No. AS3087) with Agfa Color-Solinar f/2.8 50mm Lens, Agfa Reflex (Serial No. AF2549) with Agfa Color Apotoar f/2.8 45mm Lens. Manufactured in Germany.
270. Master Reflex Roll Film Camera (Serial No. 011709) with Primotar f/3.5 85mm Lens, Tele Picon f/5.5 150mm Lens and Astra f/3.5 135mm Lens. Manufactured in Germany.
271. Pair of Agfa 35mm Film Cameras. Various models including Agfalex (Serial No. JE6535) with Agfa Color-Apotar f/2.8 50mm Lens and Agfamatic Reflex (Serial No. ZW3110) with Agfa Color Apotoar f/2.8 45mm Lens. Manufactured in Germany.
272. Rectaflex Roll Film Camera (Serial No. 2,569,516) with Xenon f/2 50mm Lens. Manufactured in Italy.
273. Pair of Roll Film Cameras. Various manufacturers including Welta with Xenon f/2 Lens and Compur-Rapid Shutter (Serial No. 6092452) and Balda with Color-Baldinar f/2.8 lens and Prontor-Svs Shutter (Serial No. 135343).
274. Pair of Kodak Retina IIIc Cameras with Retina-Xenon f/2.0 50mm Lenses and Compur Shutters (Camera Serial Numbers 667432 and R995948). Manufactured by Eastman Kodak Co. in Rochester, NY.
275. Ditto 99 Roll Film Viewfinder Camera with Dittar f/2.8 45mm Lens, Dittar f/6.3 105mm lens and Dittar f/4.5 70mm lens. Manufactured by Saraber in Goslav, Germany.

276. Praktina IIA SLR Roll Film Camera (Serial No. 107841) with Rapid Wind Grip. (Winder Serial No. 04307). Manufactured by KW in Germany.
277. Leica 250 Reporter Body (Serial No. 135648). An Early Model FF converted to GG in Nickel Finish with a top speed on 1/1000 sec. Manufactured by Ernst Leitz in Wetzlar, Germany circa 1934. Includes a Rare Leica Bakelite Body Cap.
278. Leica II Camera Body (Serial No. 87721 written in pencil on inside, but has been filed off on the top of the camera). Manufactured by Ernst Leitz in Wetzlar, Germany circa 1932.
279. Leica III Camera Body (Serial No. 145512). Manufactured by Ernst Leitz in Wetzlar, Germany circa 1934.
280. Leica Standard Model E Camera Body, (Serial No. 172920). Manufactured by Ernst Leitz in Wetzlar, Germany circa 1935.
281. Leica IIIa Camera Body with Vacu Synchronizer (Serial No. 235312). Manufactured by Ernst Leitz, Wetzlar, Germany.
282. Leica III Camera Body (Serial No. 203174). Manufactured by Ernst Leitz in Wetzlar, Germany.
283. Leica III B Camera Body (Serial No. 280121). Manufactured by Ernst Leitz in Wetzlar, Germany circa 1938-46.
284. Leica III C Camera Body (Serial No. 392960). Manufactured by Ernst Leitz in Wetzlar, Germany circa 1943-46.
285. Leica III F Black Dial Camera Body (Serial No. 453469). Manufactured by Ernst Leitz in Wetzlar, Germany circa 1951.
286. Leica IIIa Camera Body (Serial No. 203781). Manufactured by Ernst Leitz, Wetzlar, Germany.
287. Leica III F Black-Dial Camera Body (Serial No. 551764), with US import certificate. Manufactured by Ernst Leitz in Wetzlar, Germany circa 1951.
288. Leica IIIc Camera Body (Serial No. 429397). Manufactured by Ernst Leitz in Wetzlar, Germany circa 1946-47.
289. Leica IIIc Camera Body (Converted to IIIf) with Shark Skin (Serial No. 501782). Manufactured by Ernst Leitz in Wetzlar, Germany.
290. Leica IIIa Camera Body with IIIb top (Serial No. 255799). Manufactured by Ernst Leitz in Wetzlar, Germany.
291. Leica IIIf Red-Dial Camera Body (Serial No. 626093). Manufactured by Ernst Leitz in Wetzlar, Germany circa 1952-53.

292. Leica IIIc Camera Body (Serial No. 391122) with K Shutter and SCNOO Rapid Winder. Manufactured by Ernst Leitz in Wetzlar, Germany.
293. Leica IIIa Camera Body (Serial No. 217121). Manufactured by Ernst Leitz in Wetzlar, Germany.
294. Summicron-R f/2 50mm Bayonet-Mount Lens (Serial No. 2192513) with Original Box. Manufactured by Ernst Leitz in Wetzlar, Germany.
295. Summar f/2 5cm Leica Screw-Mount Lens (Serial No. 350318), Chrome. Manufactured by Ernst Leitz in Wetzlar, Germany.
296. Summar f/2 50mm Leica Screw-Mount Collapsible Lens (Serial No. 249542), Nickel. Manufactured by Ernst Leitz in Wetzlar, Germany.
297. Elmar f/3.5 50mm Leica Screw-Mount Lens, Nickel. Manufactured by Ernst Leitz in Wetzlar, Germany.
298. Summitar f/2 5cm Leica Screw-Mount Lens (Serial No. 584609), Chrome. Manufactured by Ernst Leitz in Wetzlar, Germany.
299. Summitar f/2 5cm Leica Screw-Mount Lens (Serial No. 815182), Chrome. Manufactured by Ernst Leitz in Wetzlar, Germany.
300. Elmar f/3.5 50mm Leica Screw-Mount Lens (Serial No. 591679), Chrome. Manufactured by Ernst Leitz in Wetzlar, Germany.
301. Summitar f/2 5cm Leica Screw-Mount Lens (Serial No. 663537), Chrome. Manufactured by Ernst Leitz in Wetzlar, Germany.
302. Summitar f/2 50mm Screw-Mount Collapsible Lens (Serial No. 505750), Chrome. Manufactured by Ernst Leitz in Wetzlar, Germany.
303. Summitar f/2 5cm Leica Screw-Mount Lens (Serial No. 585968), Chrome. Manufactured by Ernst Leitz in Wetzlar, Germany.
304. Summitar f/2 5cm Leica Screw-Mount Lens (Serial No. 553373), Chrome. Manufactured by Ernst Leitz in Wetzlar, Germany.
305. Elmar f/3.5 50mm Leica Screw-Mount Lens (Serial No. 537434), Chrome. Manufactured by Ernst Leitz in Wetzlar, Germany.
306. Elmar f/3.5 50mm Leica Screw-Mount Lens (Serial No. 597221), Chrome. Manufactured by Ernst Leitz in Wetzlar, Germany.
307. Elmar f/3.5 35mm Leica Screw-Mount Lens (Serial No. 297806), Chrome. Manufactured by Ernst Leitz in Wetzlar, Germany.
308. Summaron f/3.5 35mm Leica Screw-Mount Lens (Serial No. 776101), Chrome. Manufactured by Ernst Leitz in Wetzlar, Germany.
309. Elmar f/3.5 50mm Leica Screw-Mount Lens (Serial No. 263763), Chrome. Manufactured by Ernst Leitz in Wetzlar, Germany.

310. Summar f/2 5cm Leica Chrome Screw-Mount Lens (Serial No. 316582) with a Bakelite Lens Case. Manufactured by Ernst Leitz in Wetzlar, Germany.
311. Summaron f/3.5 35mm Leica Chrome Screw-Mount Lens (Serial No. 780213) with US Import Certificate and a Bakelite Lens Case. Manufactured by Ernst Leitz in Wetzlar, Germany.
312. Hektor f/4.5 13.5cm Leica Screw-Mount Lens (Serial No. 441073), Black. Manufactured by Ernst Leitz in Wetzlar, Germany.
313. Elmar f/3.5 35mm Leica Chrome Screw-Mount Lens (Serial No. 297806) with a Bakelite Lens Case. Manufactured by Ernst Leitz in Wetzlar, Germany.
314. Elmar f/4 90mm Screw-Mount Lens (Serial No. 220280), Black/Nickel in Original Lens Box. Manufactured by Ernst Leitz in Wetzlar, Germany.
315. Hektor f/4.5 13.5cm Leica Screw-Mount Lens (Serial No. 355801) with Bakelite Lens Cap and Lens Case. Manufactured by Ernst Leitz in Wetzlar, Germany.
316. Carl Zeiss Jena Sonnar f/1.5 5cm Screw-Mount Lens for Leica. (Lens has internal fogging).
317. Leica Elmar f/4 9cm Screw-Mount Lens (Serial No. 165470), Black/Nickel with a Bakelite Lens Case. Manufactured by Ernst Leitz in Wetzlar, Germany.
318. Elmar f/4 90mm Screw-Mount Lens (Serial No. 373004), Black/Nickel with a Brown Bakelite Lens Case. Manufactured by Ernst Leitz in Wetzlar, Germany.
319. Summar f/2 5cm Leica Screw-Mount Lens (Serial No. 286786), Chrome. Manufactured by Ernst Leitz in Wetzlar, Germany.
320. Summar f/2 5cm Leica Screw-Mount Lens (Serial No. 365749), Chrome. Manufactured by Ernst Leitz in Wetzlar, Germany.
321. Hektor f/4.5 13.5cm Leica Screw-Mount Lens (Serial No. 1238455), Chrome. Manufactured by Ernst Leitz in Wetzlar, Germany.
322. Leica, Leitz Viooh Universal Adjustable-Frame Viewfinder (No. 49227) with Original Box. Manufactured by Ernst Leitz in Wetzlar, Germany.
323. Leica, Leitz Universal 5cm Viewfinder with Leather Case and a Kieffitt Viewfinder (Serial No. 3100069) for Leica. Manufactured by Ernst Leitz in Wetzlar, Germany.
324. Leica, Leitz Viooh Universal Adjustable-Frame Viewfinder (No. 20176) with Leather Case. Manufactured by Ernst Leitz in Wetzlar, Germany.

325. Leica, Leitz Vidom Universal Adjustable-Frame Viewfinder. Manufactured by Ernst Leitz in Wetzlar, Germany.
326. Leitz Interchangeable 90 Degree Penta-prism for the Visoflex. Manufactured by Ernst Leitz in Wetzlar, Germany.
327. Leica, Leitz Vidom Universal Adjustable-Frame Viewfinder with Original Box. Manufactured by Ernst Leitz in Wetzlar, Germany.
328. Leica, Leitz Vidom Universal Adjustable-Frame Viewfinder with Original Box. Manufactured by Ernst Leitz in Wetzlar, Germany.
329. Leica, Leitz (New York) Universal Adjustable-Frame Viewfinder with Leather Case. Manufactured by Leitz in the USA.
330. Leica, Leitz Viooh Universal Adjustable-Frame Viewfinder (No. 50129) with Leather Case. Manufactured by Ernst Leitz in Wetzlar, Germany.
331. Leitz Reflex Housing Kit for Leica (Serial No. 1915) with Telyt f/4.5 20cm Screw-Mount Telephoto Lens (Serial No. 272372) in Leitz / Leica Leather Case. Manufactured by Ernst Leitz in Wetzlar, Germany.
332. Leitz, Visoflex (No. 26413) with Rare Cable and Einstellupe 4x PEGOO in Original Box for Leica M Series. Manufactured by Ernst Leitz in Wetzlar, Germany.
333. Leitz 1/3x Microphotographic Accessory. Manufactured by Ernst Leitz in Wetzlar, Germany.
334. Large Group of Leica Accessories Including Leitz Optisches Nooky/ Nookyhesum, Leitz binocular eyepiece 5cm= 3.5x 9cm=6x, Leitz f. Elm. Lens, (2) Vorsatzlinse 3 Elpet, (2) Vorsatzlinse 2 Elpik, (2) Leitz Yellow 1 Filters, Leitz CF Filter, Leitz Orange Filter, Leitz Rotfilter (hell), Samigon Extension Tube set for Leica, (2) 60mm Lens extension tubes, (2) 90mm Lens extension tubes, TZFOO Lens extension Tube, 30mm Lens extension tube, Summar Gegenlichtblende Soomp Lens Shade, (2) Leitz N.Y. Summar Lens Shades, Summar Lens Shade, Leitz 2.8-5cm Screw-Mount to Bayonet Mount Adapter, Leitz 3.5cm Lens Shade, Leitz N.Y. Elmar Lens Shade, unmarked lens shade, Leitz C 4/90 - 5.5 Rubber Lens Shade and cap, Unmarked Lei Camera Body Cap, Pair of Film Trimmers (1 by Leitz), (3) Leica Film cans and (6) Film Roll cassettes (Some by Leitz) and a Leitz, NY Film developing tank. Manufactured by Ernst Leitz in Wetzlar, Germany.
335. Large group of Leica Accessories Including Leitz Canada M4-2 Camera Part, (6) Leica Film holders and cartridges, Leitz film winder, Leitz film trimmer, tech photo rapid winder, Leitz bayonet to screw-mount lens adapter (Serial No. 16466M), Leitz Optisches Nooky-Hesum, (7) Shutter Releases, Leitz Eldia Kopier-Apparat (Chipped on Face) and (3) Leitz Copying Accessories (U.S. PAT. No. 1996481). Manufactured by Ernst Leitz in Wetzlar, Germany.

336. Large Group of Leica Accessories Including (5) Leitz Synchronblitzer Flash Units (4 in boxes), (2) Leitz Chico Plastic Body Flash Units (1 with Case), (12) Leitz Flash cords, Geiss-Kontakt Synchronizer for Leica, Leitz Adjustable Flash Bracket TOOM, Flash Synchronization baseplate for early screw-mounted Leica Cameras (Prior to IIIc), Leitz NY Leica Meter in box with and extra Booster, Direkt Selbstausröser for Leica, Autoknips Timer for Leica and a Geiss Synchron-contact for Leica. Manufactured by Ernst Leitz in Wetzlar, Germany.
337. A Pair of Brown Leather Leica Camera Cases. Manufactured by Ernst Leitz in Wetzlar, Germany.
338. Group of 4 Leather Leica Camera Cases including (2) Brown, Black and Grey. Manufactured by Ernst Leitz in Wetzlar, Germany.
339. Group of 3 Leather Leica Camera Cases including Brown and (2) Olive. Manufactured by Ernst Leitz in Wetzlar, Germany.
340. Group of 14 Leitz, Leica Accessories Including (8) Leather Camera Cases, (2) Leather Lens Cases, (2) Plastic Lens Cases and (2) Original Boxes for IIIa and IIIf. Manufactured by Ernst Leitz in Wetzlar, Germany.
341. Leicina 8 V, 8mm Movie Camera (Serial No. 31928) with Variogon f/1.8 8-48mm Lens. Including a Leicina 110-220 Volt 50-60 Hz BYV00 Power Cord in Box. Manufactured by Ernst Leitz in Wetzlar, Germany.
342. Leicina 8 S, 8mm Movie Camera (Serial No. 23414) with Dygon f/2 9mm Lens (Serial No. 1870379) with original box, Hand Strap and 15mm Lens Shade. Manufactured by Ernst Leitz in Wetzlar, Germany.
343. Group of 3 Early Leitz Projectors including Parvo with (3) Slide Carriers and Extra Lens Assembly (Power Cord Missing), 35mm Film Strip Projector, 35mm Slide Copier (No Power Cord). Manufactured by Ernst Leitz in Wetzlar, Germany.
344. Group of 2 Leitz Slide Projectors including Model No. 315601 for 35mm Slides and Model Pradovit Color 110 for 110 Film Slides with Remote Advance Cord. Manufactured by Ernst Leitz in Wetzlar, Germany.
345. Robot 36M Camera Body (Serial No. 184498). Including a Motor Drive and Robot Power Pack Type GL24/3,5 No.1508. Manufactured by Berning, Germany.
346. Robot Recorder 36E Camera Body (Serial No. 178793a) with Savip Motorized Bracket (Serial No. 1308). Manufactured by Otto Berning & Co. in Schwelm, Westphalia, Germany.
347. Robot Luftwaffen Eigentum 35mm Film Camera with Schneider-Kreuznach Tele-Xenar f/3.8 lens. Camera Serial No. F59082-5. (The body leather is coming detached.) Manufactured by Otto Berning & Co. in Schwelm, Westphalia, Germany.

348. Robot Recorder 36 Roll Film Camera (Serial No. K-160828a) with Schneider-Kreuznach Xenon f/1.9 Lens. Manufactured by Otto Berning & Co. in Schwelm, Westphalia, Germany.
349. Robot Film Camera (Serial No. 17990) with Carl Zeiss Jena f/2.8 Tessar Lens and Leather Case. Manufactured by Otto Berning & Co. in Schwelm, Westphalia, Germany. (The leather on the camera covering is partially detached).
350. Robot 35mm Film Camera (Serial No. B80670) with Carl Zeiss Jena Tessar f/2.8 Lens. Manufactured by Otto Berning & Co. in Schwelm, Westphalia, Germany.
351. Group of Robot Accessories. Including 12V Handle with Shutter Release and Cord, 18V Battery with Carrying Strap in Original Box, Push Button Starter, Leather Carrying Case and (2) Metal Film Cartridges. Manufactured by Otto Berning & Co. in Schwelm, Westphalia, Germany.
352. Large Group of Minox Accessories including a Binocular Attachment, ME 2 Computer Flashgun with 117 AC Charging Unit and a 110-240 V Charging Unit, B. C. Flashgun Model A (for AG 1 Bulbs), Flash Reflector Attachment, Flash Diffuser, Right Angle Finder, Hot Shoe, Metal Snake Carrying Chain, Film Viewer, (2) Extra Leather Cases, Minox Daylight Developing Tank with Thermometer in Original Box (Condition A), 6 rolls of B&W Film. Manufactured by Minox Corporation in Germany.
353. Minox C Camera (Serial No. 2374650) with Accessories. Including Original Box, Metal Snake Carrying Chain, (2) Right Angle Viewfinders, C4 Flashgun (for FlashCubes), Flashgun Model B (for A G 1 Bulbs), ME-1 Flash with Battery Pack and AC Adapter, Electronic Flash and AC Power Pack (Missing Batteries, Connection Cord is Frayed), Minox Exposure Meter with Leather Carrying Case and Metal Chain, Transparency Cutter. Manufactured by Minox Corporation in Germany.
354. Large Group of Minox Accessories including a Minox Tripod with Cable Release in Leather Case, Minox Reprostativ Copying Stand, Tripod Attachment, Minox Projector Type 3001 No. 8562 with Carrying Case, Minox Minotact Projector Type 3003 No. 5448, Minox Slide Magazines, Minox Slide Magnifier and Minox 3x3cm Glass Slide Mounts. Manufactured by Minox Corporation, Germany.
355. Minox B Camera with Built-in Coupled Exposure Meter (Serial No. 632325) and Accessories. Including Original Box, Owner's Manual, Leather Carrying Case with Metal Snake Carrying Chain, Filter Set (Y,O,B), Color Correction Filter Set (R3, R6, B6), Right Angle Viewfinder, Transparency Cutter, Electronic Flash and AC Power Supply, Flash Lock Plate. Manufactured by Minox Corporation, Germany.

356. Rolleiflex SL26 (Serial No. 3515527) Camera with Tessar f/2.8, 40mm Lens (Serial No. 4565935) and Accessories. Including Pro-Tessar f/4, 80mm Lens (Serial No. 4574361), Pro-Tessar f/3.2, 28mm Lens (Serial No. 4917405) in Leather Case, Rollei Flash 121 BC with Case, SL 26 Lens Shade, Leather Camera Case, Leather Neck Strap. Manufactured by Rollei-Werke Franke & Heidecke in Braunschweig, Germany.
357. Group of 2 Rollei Cameras. Including Rollei A 26/C 26 Camera (Serial No. 3673695) with C 26 Computer Flash, Battery Charger Type D in Original Packaging and a Rollei A 110 (Serial No. 3202222) with Snake Chain, Flash Adapter, and Leather Carrying Case in Original Packaging. Manufactured by Rollei-Werke Franke & Heidecke in Braunschweig, Germany.
358. Pair of Rollei 16 S (16mm Film) Cameras and Accessories. Including Camera (Serial No. 3894824) with Leather Carrying Case, and (Serial No. 3883181) with Leather Carrying Case, Rolleiflash 16, Tripod Head and Extra Leather Carrying Case. Manufactured by Rollei-Werke Franke & Heidecke in Braunschweig, Germany.
359. Group of Rollei Flash Accessories. Including Rolleiflash with 5-1/2 inch Reflector, Rolleiflash with 4-1/4 inch Reflector, Rollei E 22 C Flash with Charger, Rollei Flash E 19 C with Charger, Patch Cord and carrying case. Manufactured by Rollei-Werke Franke & Heidecke in Braunschweig, Germany.
360. Group of 3 Rollei Carrying Cases including a Metal Ever Ready Case with Leather Carrying Strap in an original box, Rollei Magic Leather Carrying Case in Original Box (No Lid) with Rollei Dessicant Cartridge and a Rolleiflex Leather Carrying Case. Manufactured by Rollei-Werke Franke & Heidecke in Braunschweig, Germany.
361. Group of Rollei Camera Accessories. Including a Rolleikin 2 35mm Film Adapter in Original Box, Rolleiflex Plate Adapter in Original Box, Rollei Micro Prism in Original Box, (2) Rollei Micro Tubes (One in Original Box), Rolleiflex Acrylic Ground Glass, Replacement Back for Rolleikin DRP, an Unknown Item in Folding Case. Manufactured by Rollei-Werke Franke & Heidecke in Braunschweig, Germany.
362. Group of Three Japanese Subminiature Cameras including (2) Hit Cameras and (1) Minetta Camera, each with a Leather Case.
363. Mycro IIIA Subminiature Camera with Leather Case. Manufactured in Japan circa 1953.
364. Start 35 Subminiature Bakelite Camera with Leather case. Manufactured by Ikko Sha Co. in Japan.



365. Group of 3 Subminiature cameras including a Metal Sida Camera with a Sida-optik f/8 35mm Lens (the right side of the front of the camera is missing), a Cub Camera manufactured by American Advertising and Research Corp. in Chicago, IL, and a Univex Model A Camera by Universal Camera Corp. in New York, NY.
366. Secam Stylophot Subminiature Color Viewfinder Camera with Bakelite body. Manufactured in France circa 1960.
367. Mec 16 SB Subminiature Camera (Serial No. 4600475) with a Color-Ennit f/2.8 20mm Lens. Manufactured by Feinwerke Technik GmbH in Germany circa 1957.
368. Group of 5 Subminiature Cameras including Enica-SX in Original Packaging, Minimax-Lite Camera with Electronic Lighter in Original Packaging, Micro 110 Camera in Original Packaging, Yashica Atoron Ultra Miniature Cartridge Camera with Flash, Leather Case and 80B Filter and a Fujica Mini 35mm Camera in Original Packaging.
369. Pair of Movie Cameras including a Paillard Bolex S1 Zoom Reflex Automatic Movie Camera with Instructions and Original Box. Manufactured in Switzerland and a Carena Zoomex Movie Camera (No. 101151), Manufactured in Liechtenstein.
370. US Military Issue Bell & Howell 16mm 70-J Movie Camera (Serial No. 752197) and Accessories. The set including a Rackover, 115V Motor, 12V Motor, (2) Power Cables, Auxiliary Viewfinder, Lens Shade, (2) Telephoto Eyepieces, Lenses: Angenieux 15mm f/1.3, Cooke Ivotal 1 inch f/1.4, Cooke Ivotal 2 inch F/1.4, Cooke Telekinic 4 inch f/4 and fitted wooden carrying case. Military Label on Camera: Redstone Arsenal B 7373.
371. Pair of Zeiss Ikon Motion Picture Projectors. Including a Kinox 16mm Projector (Serial No. W65992) circa 1937 and Kinebox B Schmalfilmkoffer 16mm Projector (Serial No. W52603K) circa 1933. (Power cord is missing on both).
372. Pair of Early Motion Picture Projectors including a Pathéscope 200 B 9.5mm Projector, manufactured in England circa 1933 (Base previously broken, pieces have been reattached) and Siemens Standard 16mm Projector (Serial No. C21613), manufactured by Siemens & Halske AG in Berlin, Germany.
373. Pair of Bolex 8mm Motion Picture Projectors. Including Bolex 18-5 (Serial No. 2081230) circa 1961 and Bolex M 8 (Serial No. 345720) circa 1953. Manufactured by Palliard, Switzerland. (Power cord is missing on both).

374. Pair of 16mm Motion Picture Projectors. Including Bauer Pantalux 16 Silent Projector (Serial No. D25298), manufactured by Eugen Bauer GmbH in Stuttgart, Germany circa 1936 and Siemens Standard 16mm Projector (Serial No. D25298), manufactured by Siemens & Halske AG in Berlin, Germany circa 1933. (Power cord is missing on Siemens).
375. Bauer P 6 Automatic 16mm Motion Picture Projector, manufactured by Eugen Bauer GmbH in Stuttgart, Germany circa 1969. (Power cord and outside protective cover are missing).
376. Bolex G 16 Single Film Format 16mm Motion Picture Projector (Serial No. 2000059). Including a Wooden Carrying Case. Manufactured by Paillard, Switzerland circa 1941. (Outer covering of case is coming off on bottom and sides. The inside of the case is very dirty. The power cord plug is missing).
377. Group of 3 Paillard Bolex Movie Cameras. Various models including Bolex L8, Bolex D-8L, and Bolex C8. Manufactured by Paillard, Switzerland.
378. Group of 3 Paillard Bolex Movie Cameras. Various models including Bolex L8, Bolex D-8L, and Bolex C8. Manufactured by Paillard, Switzerland.
379. Group of 6 Pathé Movie Cameras. Various Models including a Cinor Special Berthiot, a Motocamera, (2) Pathex, a Pathescope, and a Super 16.
380. Group of 3 Siemens 16mm Movie Cameras, Various Models. Manufactured in Germany.
381. Group of 4 Kodak Movie Cameras. Various Models including Cine Kodak Model K, (Serial No. 43550), Cine Kodak Model B in Brown (Serial No. 88034), Cine Kodak Model B in Black (Serial No. 12649) and Cine Kodak Model K (Serial No. 14708). Manufactured by Eastman Kodak Co. in Rochester, NY.
382. Group of 6 Movie-Related Objects. Various Manufacturers including Dekko Movie Camera manufactured by Dekko in England (A Pathescope Type H Film Cartridge is in this camera) and Leather Case, Ditmar 2187 manufactured by Ditmar in Vienna, Austria, Eumig Movie Camera manufactured in Austria (A Pathex Film Cartridge is in this camera.), Bell & Howell Filmo 70 Automatic Cine Camera manufactured in the USA, Hugo Meyer Correctoscope Focusing and Exposure Meter, manufactured in the USA, and Campro Cine Camera Projector manufactured by Home Cine Cameras, Ltd. in England.
383. Group of 6 Nizo Movie Cameras. Various Models. Including (2) Cine Nizo 8E, (2) Exposomat 8, Cine Nizo 9-1/2 Mod. F and Nizo Heliomatic 8 Trifo with a Leather Case, Nizo 55 Handle and Shutter Cable. Manufactured in Germany.

384. Group of 4 Movie Cameras. Various Models including Briskin 8mm Camera, Unknown Super 8 Camera, and Cine Perflex Double Eight Model A.
385. Group of 5 Kodak 8mm Movie Cameras. Including (2) Cine-Kodak Eight Model 20, Model 60, (2) Model 25, and a Leather Carrying Case. Manufactured by Eastman Kodak Co. in Rochester, NY.
386. Group of 39 Photography Related Books. This lot only includes The British Journal Photographic Almanac (1933-1963), Hard and Soft Bound Editions.
387. Group of Photography Related Books Dealing with The History of Photography. Including 165 Issues of Photographica, (A Publication of the Photographic Historical Society of New York), 3 Hardbound Annual Volumes of Photographica, I - XV, (1968-1983), 4 Copies of Photographica, 10th Anniversary Issue. (One of the Anniversary Issues is signed by Beaumont Newhall).
388. Group of 59 Photography Related Books Dealing with Photographic Principles and Practices. Including a Complete Set of The Self-Instructing Library of Practical Photography, (1909), 9 Volumes. (The bindings on these volumes are in poor condition.)
389. Group of 50 Photography Related Books Dealing with Optics and Photographic Engineering.
390. Group of 73 Photography Related Books Dealing with Photographic Equipment Buying Guides. Including Auction Catalogs, PTN (Photo Trade News) Buying Guides (1979-1988), Popular Photography Annual Directories and Buyers Guides 1948-1961, 1983 -1986).

## **Fuller's LLC (The "Auction Company") Terms and Conditions of Sale**

1. This auction is a public sale conducted by a Pennsylvania licensed and bonded auctioneer.
2. The highest bidder acknowledged by the auctioneer will be the Buyer. In the event of any dispute between bidders, or in the event of doubt as to the validity of any bid, the auctioneer will have the final discretion either to determine the successful bidder or to reoffer and resell the article in dispute. If any dispute arises after the sale, Fuller's LLC's sale record is conclusive.
3. All property is sold "AS IS" and neither Fuller's LLC nor the Consignor makes any guarantees, warranties or representations, expressed or implied, with respect to the property or the correctness of the catalog or other descriptions of the authenticity of authorship, physical condition, size, quality, rarity, importance, provenance, exhibitions, literature or historical relevance of the property or otherwise, except where applicable under the terms of guarantee. Cameras or objects are not guaranteed to be in working condition. No statement anywhere, whether oral or written, shall be deemed such a guarantee, warranty or representation. All bidders are responsible for obtaining condition reports and/or personally inspecting the property before bidding to determine its condition, size, and whether or not it has been restored. Any items purchased and removed from the auction cannot be returned.
4. Fuller's LLC reserves the right to withdraw any lot and/or property before the sale.
5. The auctioneer reserves the right to reject any bid which, in his opinion, is not commensurate with the value of the article being offered. The auctioneer may also reject any bid that may be determined as having a harmful effect on the item in question or the sale as a whole.
6. All bids are by numbered lots in the catalog unless otherwise announced by the auctioneer.
7. Some of the lots in the sale may be subject to a reserve. The reserve is a confidential minimum price agreed upon by the consignor and Fuller's LLC below which the lot will not be sold. A representative of Fuller's LLC will execute such reserves by bidding for the consignor. The reserve will never be higher than the low estimate.
8. Title of each lot passes when the auctioneer says "SOLD". Thereafter, any loss by fire, theft, breakage, or any other cause is the sole responsibility of the Buyer. Merchandise must be packed and transported by the Buyer at his/her own risk and expense. Shipping is the responsibility of the Buyer. If any employee or agent of Fuller's LLC packs or transports the merchandise, it is fully at the risk, responsibility and expense of the Buyer and Fuller's LLC shall not be liable for any loss or damage that may be caused by such employee or agent. The Buyer is responsible for any duties and taxes related to international shipments.
9. A buyer's premium will be added to the successful bid price and is payable by the Buyer as part of the total purchase price. The buyer's premium for each individual lot is 18% of the successful bid price. Buyer is responsible for all wire transfer fees. This amount will be added to the successful bid price of each lot purchased and is payable by the Buyer together with the applicable sales tax, which is applied to the total cost of the purchase. Payment is due no later than 15 days after the auction date. All bidders must submit a MasterCard or Visa account number with the expiration date as a security deposit. Fuller's LLC reserves the right

to charge the total invoice amount plus an additional 2% handling fee to the credit card account on record if the bidder has not paid within 15 days of the auction date. The pick-up or delivery should also be arranged at time of payment. Storage fees of \$5 per lot per business day or \$25 per lot per week will be charged for items left more than 30 days after the auction. Items left more than 45 days past the auction date will be consigned to a future auction without notification to the Buyer.

10. Unless purchased for resale, the Buyer will be required to pay the applicable Commonwealth of Pennsylvania Sales Tax and the City of Philadelphia Sales Tax. Dealers must have a Sales Tax Number and be registered with Fuller's LLC.

11. Payment may be made by cash, credit card (Visa or MasterCard), PayPal, or by wire transfer. Payment may be made by personal check only if credit has been previously established with Fuller's LLC or if Fuller's LLC has received a bank authorization guaranteeing the personal check. Fuller's LLC reserves the right to hold merchandise purchased by personal check until the check has cleared the bank, if Fuller's LLC deems such action necessary to protect Fuller's LLC's interest.

12. Bidding on any item indicates the bidder's acceptance of these terms and all other terms published or announced before and at the time of sale.

13. Fuller's LLC has engaged the services of Live Auctioneers as a service for its clients who wish to bid and buy online. Please proceed to [www.liveauctioneers.com](http://www.liveauctioneers.com) for all necessary information on how to bid and buy online using their system. The user of Live Auctioneers indemnifies and holds the Auction Company and its consignors harmless against any claim arising out of or resulting from their use of the Live Auctioneers website, including all losses, damages, liabilities, and all fees (including attorney's fees), costs, and expenses incurred in connection with any claim. Under no circumstances, including, but not limited to, negligence, shall the Auction Company and its consignors be liable for lost profits or any special, incidental, or consequential damages that result from the use of, or the inability to use, this website. If the user of Live Auctioneers places absentee bid(s) with the Auction Company, Live Auctioneers and also bids in person, by phone or by any other means, it is solely the bidder's responsibility to cancel any or all absentee bids prior to the start of the auction. If the bidder does not or cannot, regardless of any reason, the bidder will be held responsible for the purchase of the property.

14. Fuller's LLC accepts absentee bids in person, by mail, or by fax. Absentee bids should be received no later than 12 Noon on the last business day preceding the auction. Please call Fuller's LLC to confirm receipt of any faxed absentee bids. All absentee bids are handled as though the bidder is in attendance. These bids are executed by a designated Fuller's LLC employee. A 25% deposit is required on all absentee bids. Fuller's LLC buys all absentee bid designated lots for the bidder at one bidding increment above where all competition stops bidding, as long as the absentee bid has not already been surpassed by the bidding at the auction. Please check and comply with these bidding increments. In case of failure to meet these terms, Fuller's LLC will reduce each bid not at an acknowledged bidding increment to the next lower bidding increment. Due to Fuller's LLC's structured bidding increments, it is very likely that several people will leave identical bids. The earlier absentee bid left with the Auction Company wins in the event of a tie bid. All absentee bids placed on Live Auctioneers are sent to the Auction Company during the actual sale at the time the lot is being offered for sale. There is no time advantage to these absentee bids at all. All absentee bidder names and bids are held in strictest confidence, disclosed only in the event of a question after the sale. Absentee bidding is a convenience offered to Fuller's LLC's customers and, while Fuller's LLC will make every effort to execute the bidder's instructions, the Auction Company is not liable or responsible for any errors or failure to do so. If the bidder places absentee bids with the Auction Company, Live Auctioneers and also bids

in person, by phone or any other means, it is solely the bidder's responsibility to cancel any or all absentee bids prior to the start of the auction. If the bidder does not or cannot cancel these bids, regardless of any reason, the bidder will be held responsible for the purchase of the property.

15. Telephone lines designated for telephone bidding are available on a first come, first served basis. Please reserve a telephone line as soon as possible. Telephone lines must be reserved in person or by telephone no later than 12 Noon on the last business day before the auction. Unauthorized faxed requests for telephone lines are not accepted. The bidder should first determine the lots on which the bidder wishes to bid before requesting a phone line reservation. Please request and review condition reports for these lots in advance of reserving a phone line. Fuller's LLC will contact the bidder at only one phone number during the auction. Fuller's LLC suggests that the bidder submits absentee bids if the bidder is unsure of his/her whereabouts at the time of the sale. All requests for overseas telephone lines must be accompanied by absentee bids that will be executed on the bidder's behalf in the event of any problems with the telephone connection. It is the responsibility of the bidder to confirm his/her phone number and the lots to be bid upon by twenty-four hours before the auction. The bidder should not change the phone number after that phone number has been confirmed. If the bidder's phone number changes, the Auction Company reserves the right to refuse the bidder's bid by telephone in this auction and will not be responsible for any breakdown in communications.

Fuller's LLC strongly recommends the use of telephone land lines, which are often more reliable than mobile telephone lines. When bidding by phone, the bidder must be willing to bid up to the low estimate if the competitive bidding goes as high as the low estimate. There is absolutely no exception to this rule. However, the bidder may leave absentee bids for any amount on any lot. Bids are placed on the telephone at the discretion of the Auction Company and at the caller's risk. Fuller's LLC offers telephone bidding as a convenience to its customers. While Fuller's LLC will make every effort to execute the bidder's instructions, the Auction Company is not liable or responsible for any errors or failure to do so.

16. Bidding Increments

- \$0 to \$200 .....by \$10's
- \$200 - 500 .....by \$25's
- \$500 - 1000 .....by \$50's
- \$1000 and above .....by \$100's

(Variations from the above Bidding Increments are at the auctioneer's sole discretion.)

## Fuller's LLC Terms of Guarantee

1. Fuller's LLC warrants the authenticity of Authorship of each lot contained in this catalog on the terms and conditions set forth below. "Authorship" is defined as the creator, period, culture, source of origin, as the case may be, as set forth in the heading of a lot in this catalog, with exception of amendments by any oral or written sales-room notices or announcements. All other warranties of authenticity of authorship express or implied, are hereby disclaimed as Buyer shall take each lot "as is" and with all faults and errors of description.

2. Fuller's LLC warrants the Authorship of a lot for a period of 15 days from the date of the sale of such lot and only to the original Buyer of record at the auction. If it is determined to Fuller's LLC's satisfaction that the heading is incorrect, the sale will be rescinded provided the lot is returned to Fuller's LLC in the same condition in which it was at the time of the sale. It is also Fuller's LLC's general policy to have the Buyer obtain at the Buyer's expense the opinion of one (or two in some cases) recognized experts in the field, mutually acceptable to Fuller's LLC and the Buyer, before Fuller's LLC determines whether to rescind the sale under the above warranty.

3. The Buyer's sole remedy in the event of disputed authenticity of authorship of any lot shall be rescission of the sale and restitution of the original purchase price and premium paid by such Buyer. Fuller's LLC hereby disclaims all liability for any damages, incidental, consequential or otherwise, arising out of or in connection with any sale to the Buyer.

4. Names printed in bold letters in the catalog which identify a lot specifically as the work of the named artist or author shall mean that the work is by the named artist or author, i.e. if the name of the artist is printed in bold letters without a question mark and without any qualifying phrase such as "attributed to," "circle of," or "after." Bold and italicized names in the catalog, which attribute the work to a named artist or author, shall mean that the work is of a period or school of the artist or author, but is not, with certainty, by the named artist or author. This may also be indicated with a question mark following the name of the author.

5. Exclusions - Notwithstanding any other provision of these "Terms of Guarantee", Fuller's LLC disclaims all warranties of authenticity of authorship for all lots consisting of works of fine art by or "attributed to" artists, authors or persons living before 1870 and, when no artist, author or person is so identified, works attributed to a period which includes any date prior to 1870, and all warranties relating to the identification of the periods or dates of execution of property, which may be proven inaccurate.

6. Definitions of statements:

- a. "Attributed to" - work is of the period of the named artist and may be the work of that artist, but not definitely so.
- b. "Circle of" - work of the period closely associated with the artist or from the studio of the artist.
- c. "School of" - work by a pupil or follower of the artist, in his/her style.
- d. "After" - in Fuller's LLC's opinion, a copy of the work of the artist.
- e. "Signed" - has the signature which in Fuller's LLC's qualified opinion is the signature of the artist.
- f. "Bears signature" - has a signature which in Fuller's LLC's qualified opinion, might be the signature of the artist.

**Fuller's**  
FINE ART AUCTIONS

Download the full catalog at  
[www.FullersLLC.com](http://www.FullersLLC.com)

## The Kaprelian Camera Collection Saturday, November 19, 2011



### AUCTION PREVIEW SCHEDULE

Saturday, Nov. 12 (Noon to 5 PM)

Monday, Nov. 14 thru Friday, Nov. 18 (Noon to 5 PM daily)

Doors open at 9 AM on Saturday, Nov. 19, Auction at 11 AM

Real-time online bidding at [LiveAuctioneers.com](http://LiveAuctioneers.com)

Jeffrey P. Fuller, Auctioneer PA License AU005414

Fuller's LLC  
730 Carpenter Lane  
Philadelphia, PA 19119

Return Service Requested